

# “The Antarctic Experience”

An Air New Zealand promotional brochure

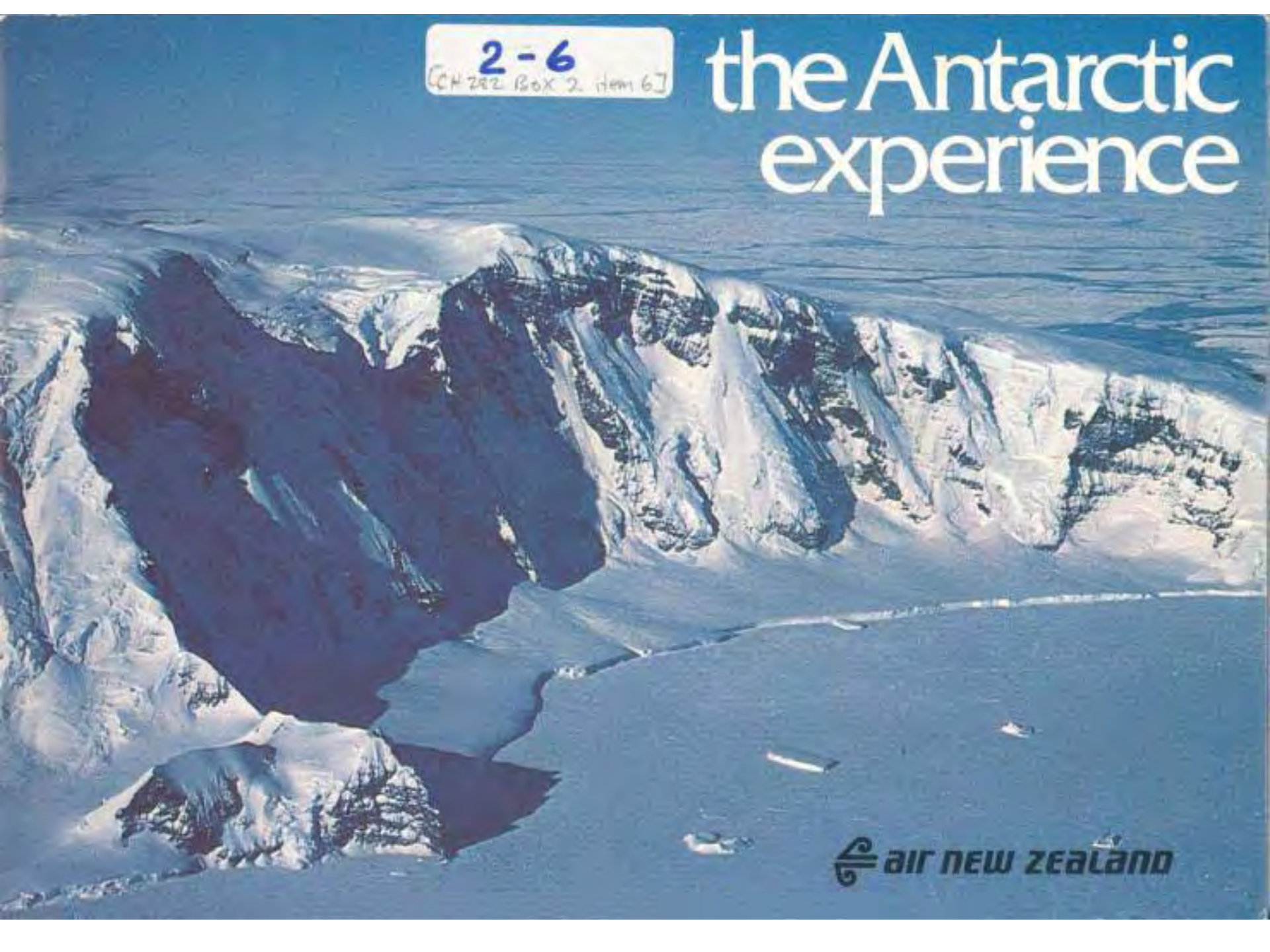
Material courtesy of Archives New Zealand.


Available on line at:

[http://www.christchurch.archives.govt.nz/v/christchurch/  
interesting+items+website/Erebus/?g2\\_page=2](http://www.christchurch.archives.govt.nz/v/christchurch/interesting+items+website/Erebus/?g2_page=2)

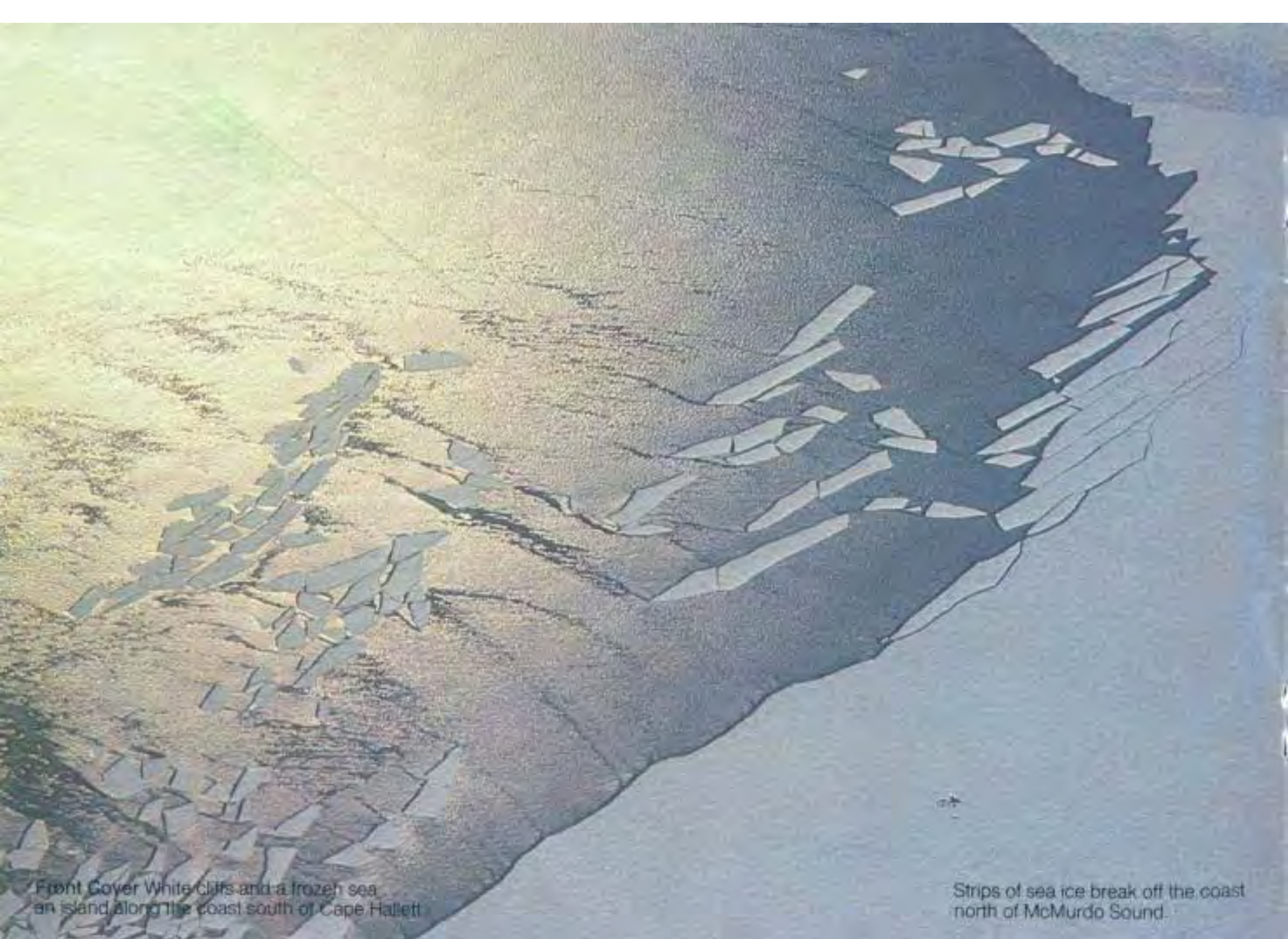
2-6  
[CH 202 Box 2 item 6]

# the Antarctic experience



 **air new zealand**





Front Cover White Cliffs and a frozen sea  
on an island along the coast south of Cape Hallett

Strips of sea ice break off the coast  
north of McMurdo Sound.



# Antarctic

## The new adventure

It is unique among land masses . . . the world's highest and coldest continent, aloof, isolated, uncompromising . . . Antarctica.

And quite impossible for the average person to visit until 1977 brought the era of Antarctic "day trips" by jet.

There could be no greater contrast between the conditions met by those

first into Antarctic seas and today's high-flying visitor.

The DC10 passenger has warmth and even luxury as he looks down on a beautiful but harsh terrain which cruelly tested the hardihood of the first explorers. He cruises in minutes over areas which took men desperate and trying days and weeks to traverse early in the century.

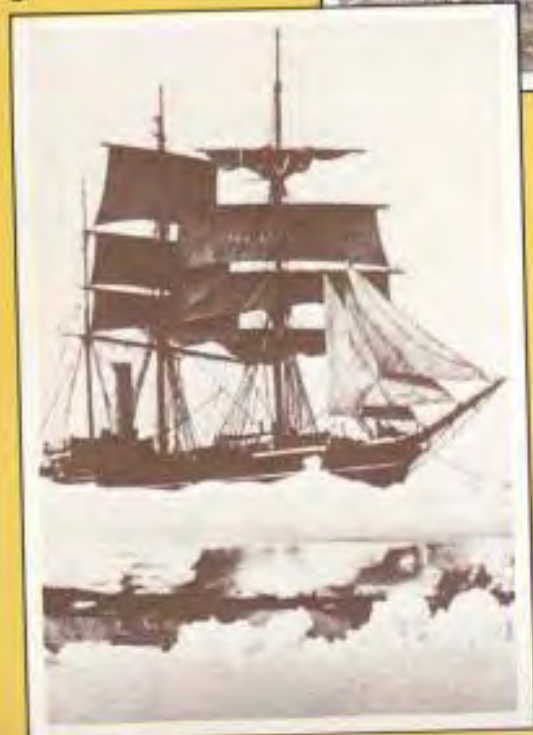




1



2



3

At the South Pole 18 Jan. 1912 (left to right): Dr. E.A. Wilson, Capt. R.F. Scott, P.O. E. Evans, Capt. L. Oates, Lieut. H.R. Bowers.



4

- 1 Left to right: the "Morning", "Discovery" and "Terra Nova" at Lyttelton, 1904.
- 2 Establishing base at Cape Evans (photo: H. Ponting)
- 3 "Terra Nova" in pack ice, Dec. 1910 (photo: H. Ponting)
- 5 The Arch Berg from within "Terra Nova" in background, Jan. 1911 (photo: Ponting).

5







6



7

## A Land of exploration

- 6 Dog team resting by frozen-in ice berg. Probably a Ponting picture from the "Terra Nova" expedition (1910-13).
- 7 At the South Pole, by Amundsen's tent (left to right): Scott, Oates, Wilson, Evans.
- 8 The "Discovery" frozen in at Hut Point. Photographed in 1902 or 1903. In background is Observation Hill and the present U.S. McMurdo Station covers the lower slopes behind the ship.
- 9 A field party demonstrates "Wolsey" woollen clothing including underwear. (Photographed by Ponting during the "Terra Nova" Expedition).
- 10 The death of the "Endurance" which has been crushed by pressure from the sea ice (photo: Hurley).



8



9



10







## Science City of the Antarctic

Scott would not have believed it. McMurdo Station may now have a summer population of 1,000 — including women — and New Zealand is only hours away.

McMurdo is a base for continuing scientific research to unlock the secrets of the continent and it has such facilities as church, hospital, shop and movie theatre.

Left: The runways of Outer Williams Field and part of Ross Island with Observation Hill and Hut and Pram Points. Scott's Hut is at Hut Point.



Land set in a frozen sea. Ross Island scene showing the U.S. McMurdo base with its oil tanks and the track leading to Scott base.





## Sentinel of McMurdo

From the DC10 flight deck — two views of the 3794 metre Mount Erebus, which towers over the Ross Island scene.



Right: Erebus, capped by a white plume, overlooks a frozen wasteland.











## A desert of ice and snow

**This page:** a dramatic jumble of peaks — the mountains of Victoria Land.

**Overleaf (from left):** A patterned surface where sea ice meets land ice near Mt. Discovery.

Summer sun lights a lunar scene.

An island cliff face overlooks a frozen sea.









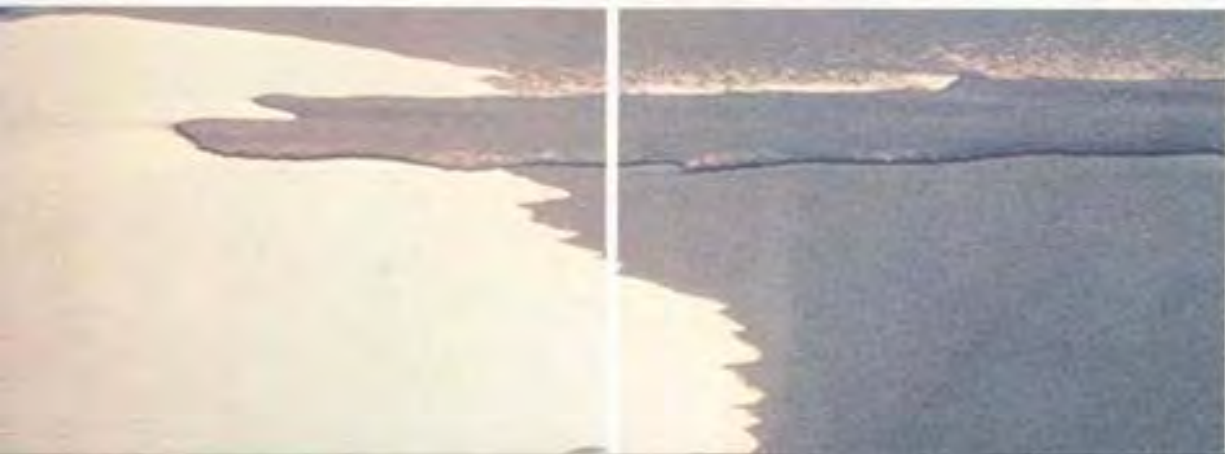








## A coast of bleak beauty



**Facing page:** Great glaciers spill into the sea north of McMurdo on the Borchgrevink coast.  
**This page:** A jagged white coastline on Ross Island.



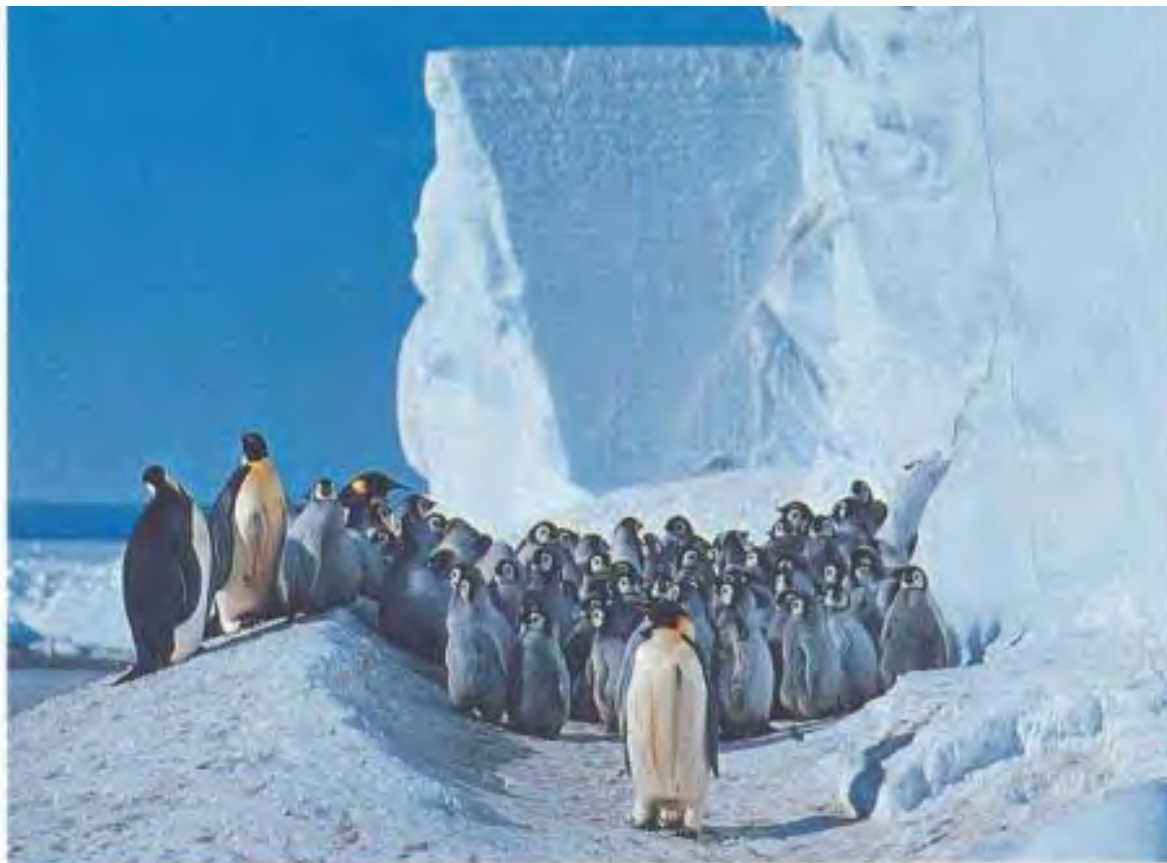
## Animals thrive in delicate balance with Nature

### This Page —

Top: An assembly of Emperor penguins at Cape Crozier.

Left: A Rockhopper penguin of Campbell Island.

Right: A killer whale surfaces.



### Facing Page —

Top Left: Companions of the trail . . . a handler and his huskies.

Top Right: A field camp in the Antarctic wilderness.

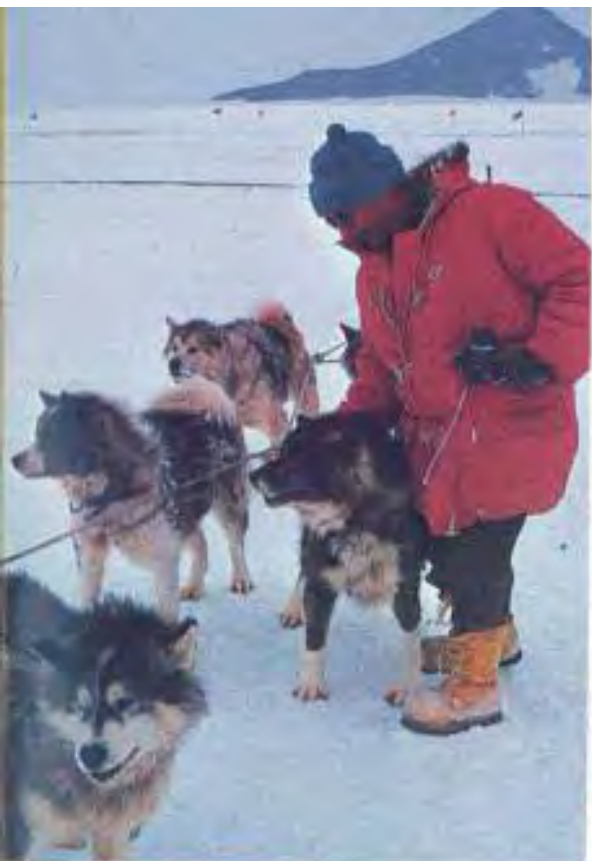
Lower Left: A cluster of Emperor penguins.

Centre: Two views of the cumbrous (on land) elephant seal.

Right: Man's long-time Antarctic companion, the husky.











Facing page: Peaks and glaciers of Victoria Land.  
This page: Ross Island and the sea.



Back cover: A great glacier separates mountain ranges in Victoria Land.





